

COPPER FORUM

ARCHITECTURE



REDEFINING THE GABLED HOUSE

This House in Seeheim, Germany, is located in a lush, green, residential area developed around 1900 and its prominent hillside position commands impressive, distant views of the Rhine valley. The archetypal form of the gabled house, defined by the development plan, was taken up thematically as a monolithic form that advances beyond the edge of the slope, yet remains in equilibrium.

Contrasting views to the outside have been concentrated and staged with just four large openings across the corners biting into the monolithic form. Vertical 'cut-out' spaces, with full roof glazing over the dining area and stairs, connect the lower and upper floors. The panoramic openings were made as big as possible in order to do justice to the magnificent views - an essential quality of the property.

A central prerequisite of the design was creation of a homogenous appearance for both roof and external wall surfaces. Cladding all these surfaces in copper made it possible to realise this monolithic character in the form of an abstract, sharp-edged geometric body, while providing a weather-proof skin. The roof and outer wall surfaces are clad with large, pre-oxidised copper panels, contrasting with the white internal surfaces.



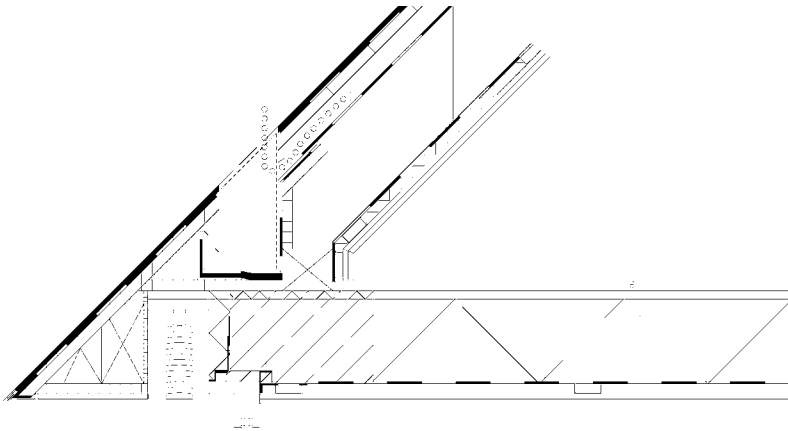
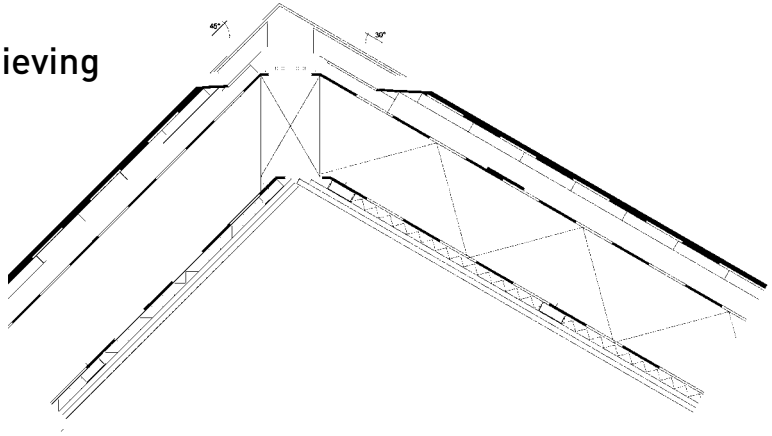


This project was COMMENDED in the 2011 European Copper in Architecture Awards page 14–17.

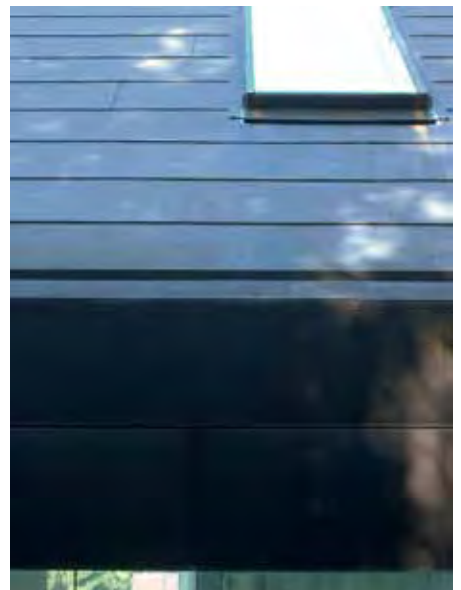


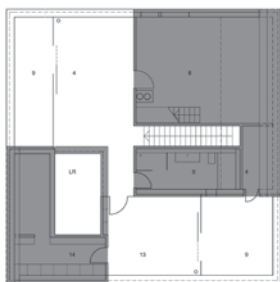
House in Seeheim, Germany – achieving a homogenous copper form

Detailing is handled with particular care to ensure that junctions and transitions are absolutely flush, while maintaining ventilation across the entire back surface area. The sharply defined white 'cuts' into the copper-clad mass form a fluid transition from outside to inside. Long-term performance was also an important driver of material choice and copper as a durable, natural material, contributes to the sustainability of the house.

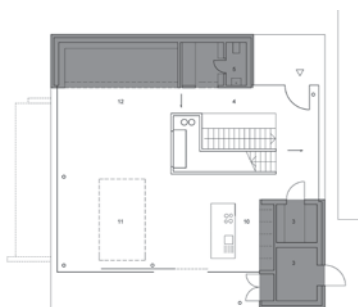


Typical cross-section

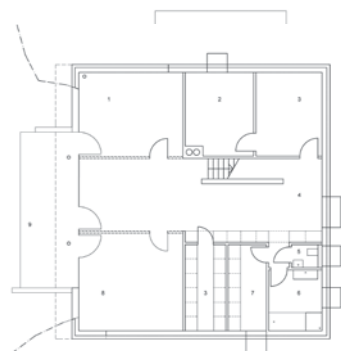




Top floor plan



Upper ground floor plan



Lower ground floor plan



Vertical 'cut-outs' with rooflights flood the spaces with daylight.



Communicating Copper

This magazine is published by the European Copper in Architecture Campaign, which also organises the major architectural awards programme discussed in this issue. But the third pillar of the Campaign is the Copperconcept.org website – and this has been re-launched to provide the definitive resource for architectural inspiration with copper.

Copperconcept.org is organised into 17 separate language sections, each edited locally. The website features an extensive selection of regularly updated project references, demonstrating different uses of copper and highlighting some of the best examples of copper architecture from around Europe and beyond. Of course, the recently announced European Copper in Architecture Awards winning projects can be found there – with video clips – but there are also articles on topical issues, such as the antimicrobial capabilities of copper.

As well as design inspiration, Copperconcept.org gives access to a range of architectural and technical publications, and links to other organisations including copper fabricators. Journalists and editors can also access press releases, articles and images for publication. Finally – and most importantly – the website hosts Copper Architecture Forum and you can register for your free subscription there, as well as download the latest, and previous, issues of the magazine.

Explore the world of copper architecture now at –
<http://www.copperconcept.org>